

PARCEL - 27  
N/F EARL C. DOTTERER, RALPH  
E. & VERDA D. DOTTERER  
DB. 160, PG. 556

PARCEL 30-02-01-202-C  
N/F DOYLE MOORE  
DB. 1106, PG. 200

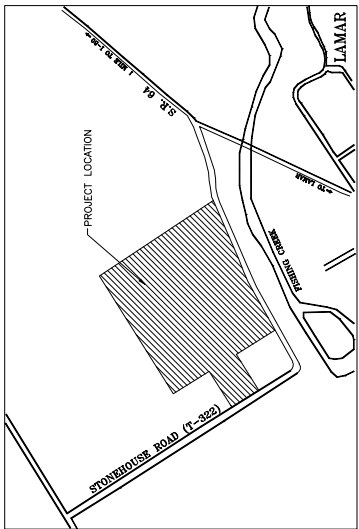
PARCEL 30-02-01-202-C.1  
N/F SCOTT BENNETT  
DB. 1120, PG. 398

PARCEL 30-02-01-202.B  
N/F CHRIS AND BETH A.  
MOORE

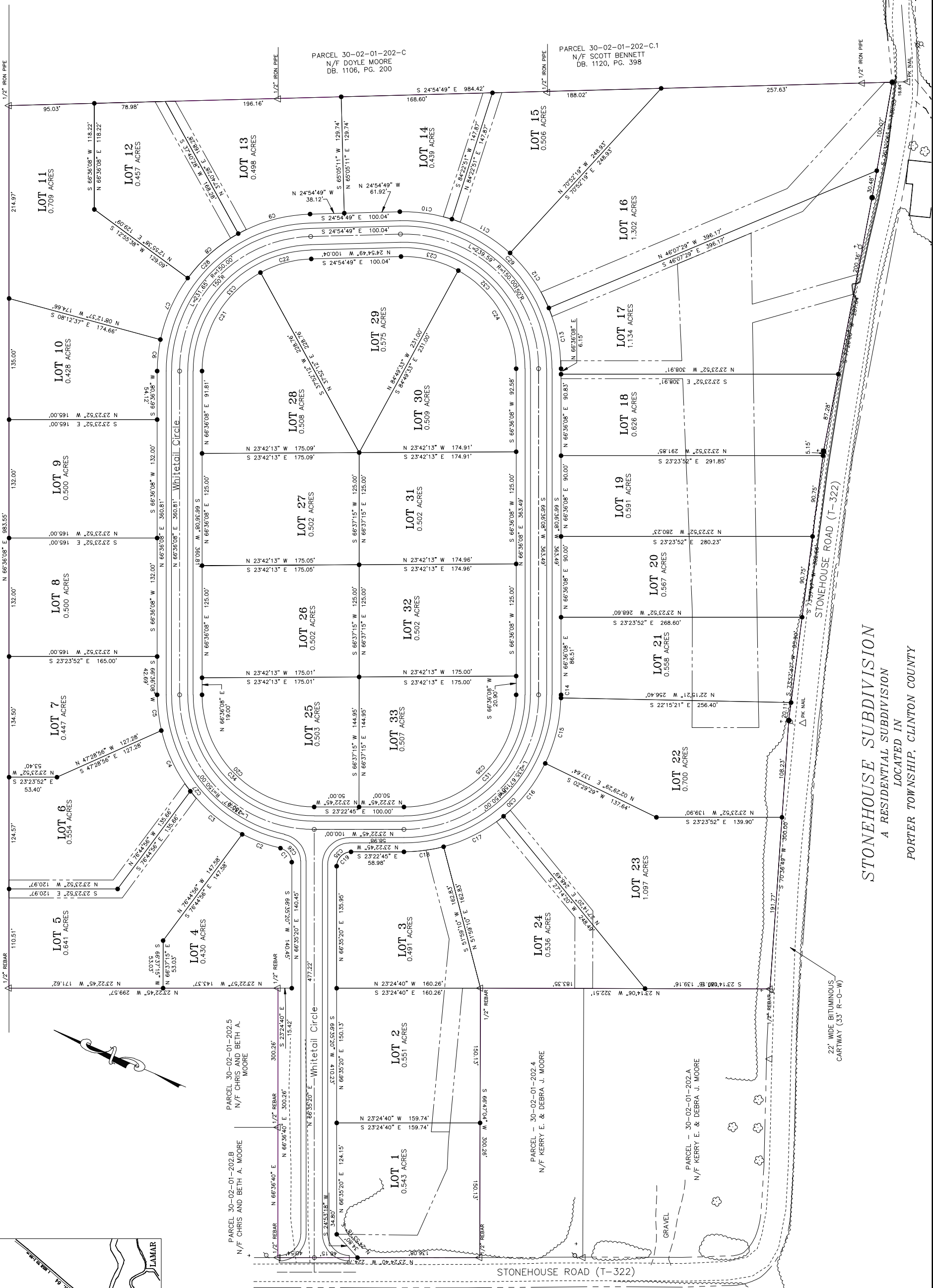
PARCEL - 30-02-01-202.4  
N/F KERRY E. & DEBRA J. MOORE

PARCEL - 30-02-01-202.A  
N/F KERRY E. & DEBRA J. MOORE

**STONEHOUSE SUBDIVISION**  
A RESIDENTIAL SUBDIVISION  
LOCATED IN  
PORTER TOWNSHIP, CLINTON COUNTY



LOCATION MAP  
N.T.S.



22' WIDE BITUMINOUS  
CARTWAY (33' R-O-W)

STONEHOUSE ROAD (T-322)

1/2" IRON PIPE

1/2" IRON PIPE

1/2" IRON PIPE

1/2" REBAR

1/2" REBAR

1/2" REBAR

1/2" REBAR

1/2" REBAR

1/2" IRON PIPE

1/2" IRON PIPE

1/2" IRON PIPE

1/2" IRON PIPE

1/2" IRON PIPE

1/2" IRON PIPE

1/2" IRON PIPE

1/2" IRON PIPE

1/2" IRON PIPE

1/2" IRON PIPE

1/2" IRON PIPE

1/2" IRON PIPE

1/2" IRON PIPE

1/2" IRON PIPE

1/2" IRON PIPE

1/2" IRON PIPE

1/2" IRON PIPE

1/2" IRON PIPE

1/2" IRON PIPE

1/2" IRON PIPE

1/2" IRON PIPE

1/2" IRON PIPE

1/2" IRON PIPE

1/2" IRON PIPE

1/2" IRON PIPE

1/2" IRON PIPE

1/2" IRON PIPE

1/2" IRON PIPE

1/2" IRON PIPE

1/2" IRON PIPE

1/2" IRON PIPE

1/2" IRON PIPE

1/2" IRON PIPE

1/2" IRON PIPE

1/2" IRON PIPE

1/2" IRON PIPE

1/2" IRON PIPE

1/2" IRON PIPE

1/2" IRON PIPE

1/2" IRON PIPE

1/2" IRON PIPE

1/2" IRON PIPE

1/2" IRON PIPE

1/2" IRON PIPE

1/2" IRON PIPE

1/2" IRON PIPE

1/2" IRON PIPE

1/2" IRON PIPE

1/2" IRON PIPE

1/2" IRON PIPE

1/2" IRON PIPE

1/2" IRON PIPE

1/2" IRON PIPE

1/2" IRON PIPE

1/2" IRON PIPE

1/2" IRON PIPE

1/2" IRON PIPE

1/2" IRON PIPE

1/2" IRON PIPE

1/2" IRON PIPE

1/2" IRON PIPE

1/2" IRON PIPE

1/2" IRON PIPE

1/2" IRON PIPE

1/2" IRON PIPE

1/2" IRON PIPE

1/2" IRON PIPE

1/2" IRON PIPE

1/2" IRON PIPE

1/2" IRON PIPE

1/2" IRON PIPE

1/2" IRON PIPE

1/2" IRON PIPE

1/2" IRON PIPE

1/2" IRON PIPE

1/2" IRON PIPE

1/2" IRON PIPE

1/2" IRON PIPE

1/2" IRON PIPE

1/2" IRON PIPE

1/2" IRON PIPE

1/2" IRON PIPE

1/2" IRON PIPE

1/2" IRON PIPE

1/2" IRON PIPE